

[beachyd.com](http://beachyd.com)

License #1077912

 beachyd 

Fence

949-777-6757

19 Hammond #510 Irvine, CA 92618

**10**  
Year  
Workmanship  
Warranty

**GALVANISED STEEL POSTS**



**REDWOOD DOG-EAR**



**REDWOOD DOG-EAR**

**10**  
Year  
Workmanship  
Warranty



**REDWOOD FLAT-BOARD**



**REDWOOD CAP & TRIM**



POWDER COATED STEEL



POWDER COATED STEEL



POWDER COATED ALUMINUM



POWDER COATED ALUMINUM



PEARL PRIVACY



SAND PRIVACY



PEARL / BEECHWOOD PRIVACY



PEARL CLOSED PICKET



PEARL SCALLOPED PICKET



PEARL OPEN PICKET



PEARL 2 RAIL



PEARL 3 RAIL



PEARL 4 RAIL





ROCKWOOD PRIVACY



BEECHWOOD PRIVACY



DRIFTWOOD PRIVACY



PEARL LATTICE TOP

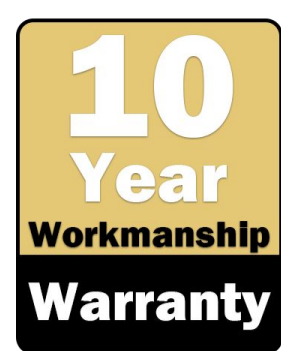
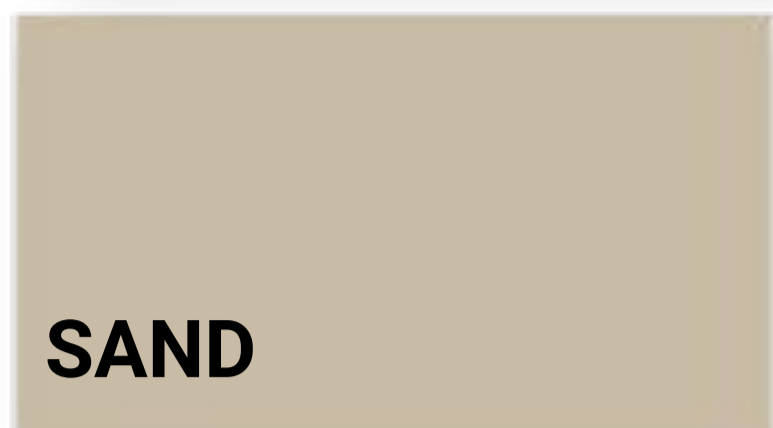
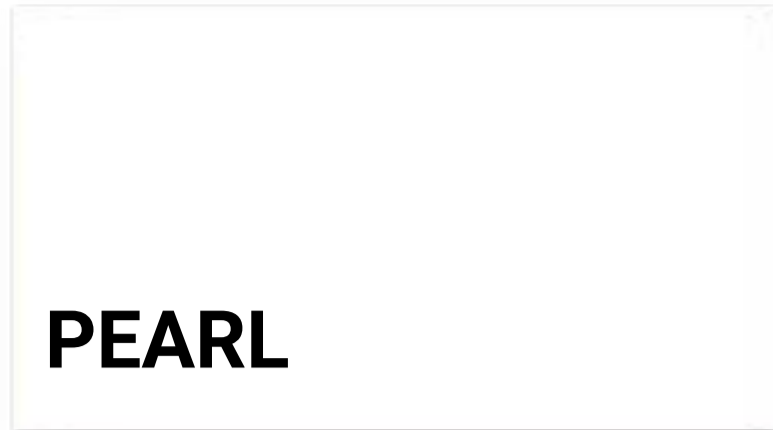


PEARL PICKET TOP

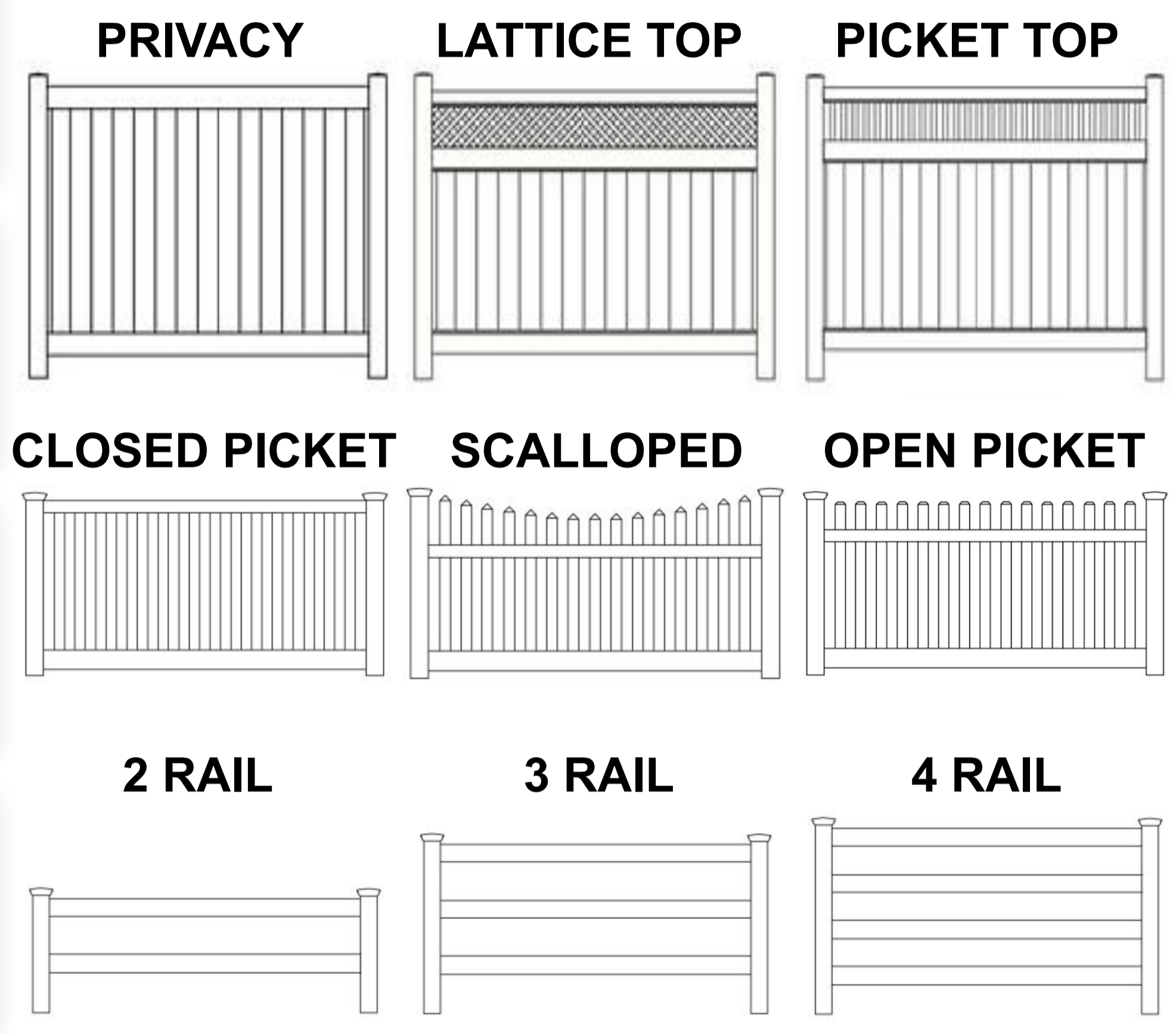


PEARL CLOSED 3 RAIL PICKET

# VINYL COLORS



## VINYL STYLES



**Perfectly Balanced Rails** The rails of your fence will never warp, bow or sag over the lifetime of your fence guaranteed. \* Do not use fence rail to retain soil. **130 MPH Wind Resistance.**

**Tongue and Groove Boards** make sure that each picket board locks tightly into place without any gaps. Rails are engineered at specific spots to enhance strength and quality. Not only does this provide added privacy for your yard, it also helps your fence hold up better against wind and other elements.

**Sun Protection** Our vinyl fences are superior in performance and durability when compared to other traditional fence materials. The base ingredient in this fence is virgin Rigid Polyvinyl Chloride. Modified to provide superior impact strength and ultraviolet resistance. Virgin vinyl is the highest grade, pure vinyl. Custom engineered to accommodate temperature changes and maintain durability. Every fence we make has color retention technology which helps protect it from the rays of the sun. Ensures colors that last and prevention of discoloration. Your Fence will not rot, blister, chalk or discolor.

**Strong Gate Systems** designed in a way so that gates stays strong, balanced & secure for the lifetime of the gate. Engineered for durability & strength. **Keystone Lock.** →

**Self Closing Gate Hinges and Gate Latches** are marine grade stainless steel and then powder coated which provides the ultimate resistance to extreme weather.





**10**  
Year  
Workmanship  
Warranty



# beachyard Fence

License #1077912

**Weathering** - PVC product samples were subjected to 2,000 hours QUV exposure utilizing ASTM G154 testing standards.

**Humidity Exposure** - PVC product samples were exposed to 48 hours environmental testing at -100 F with 95% relative humidity. Followed by 24 hours exposure to 120 F and 50% relative humidity.

**Impact Resistance** - PVC product samples were tested conforming to ASTM 964 testing protocol.

**Cycle Testing** - Gate hinges installed on a 58" x 6' gate then cycled 25,000 cycles. Gate hinges were subjected to 75 lbs. of force.

**Resistances to Corrosion** - Metal samples were exposed to 3,000 hours salt spray environmental testing conforming to ASTM B117 testing standards.

**BEECHWOOD PRIVACY VINYL FENCE**